

Fibre reinforced polymers – house building in the 21st century

Applications

Fibre Reinforced Polymers (FRP) are an incredibly versatile product used in many applications where conventional materials cannot meet required specifications and standards such as fire ratings, impact resistance and weight considerations.

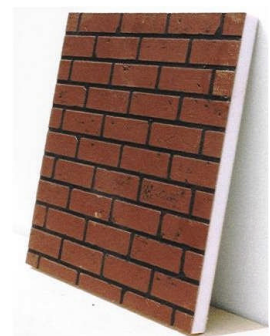
Some products are designed to replicate traditional materials such as slate, lead and timber whilst others offer the clean clinical finish of a smooth single surface.



Application 1: Cladding

FRP panels are very strong and durable (will not dent, rust or corrode) whilst maintaining an attractive appearance, and can be produced to incorporate the following features:

- any colour or surface finish
- impact resistant
- low maintenance
- any thickness
- graffiti resistant
- UV resistant
- Manufactured to size



Applications include:

- | | | |
|---|--|--|
| <ul style="list-style-type: none"> • Balcony panels • Door facings • Infill panels | <ul style="list-style-type: none"> • Curtain walling • Patent glazing • Hygienic lining | <ul style="list-style-type: none"> • Soffit panels • Fascia panels |
|---|--|--|

Application 2: Glazing

FRP products are among the toughest glazing panels available. They are manufactured using high quality resins and fibreglass making the panels virtually indestructible, with a high resistance to impact, shock and manual attack. Features include:

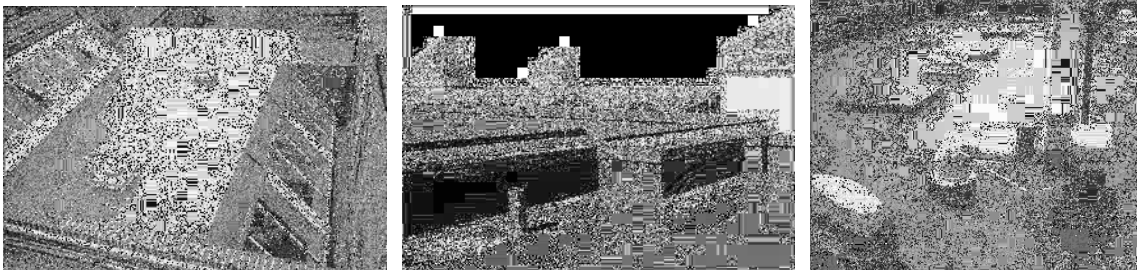


- Vandal resistant
- Shatterproof
- Graffiti resistant
- High flexural strength
- High tensile strength
- Manufactured to size
- Highly translucent
- Ultra violet protection
- Excellent light transmission
- Fire resistant
- Low expansion and contraction

Application 3: Roofing system

DRYSEAL semi-rigid roofing system is produced under strictly controlled factory conditions. This eliminates the majority of the traditional GRP "wet processes" involved on site and considerably increases the work rate. DRYSEAL has BBA approval. DRYSEAL Semi-rigid Roofing System consists of high quality components manufactured to specific production standards. This considerably enhances the integrity and reliability of the system and reduces installation time.

Having been specified by local authorities, health authorities, hospital trusts, education authorities, universities, breweries, hotel groups and other major organisations, DRYSEAL is one of the most technically advanced systems suitable for either flat or low pitched roofing. It is able to cope with the most intricate of detail and can be installed on any recognised rigid roofing grade insulation board. DRYSEAL is ideally suited to both new and refurbishment projects, from small domestic to large commercial and industrial applications.



Network Group for Composites in Construction (NGCC)

For information on leading UK companies who can meet your housing needs visit www.ngcc.org.uk